



inEMI

International Electronics Manufacturing Initiative

Welcome & Overview

*Dr. Nasser Grayeli
Chairman of the Board
January 16, 2008*

Advancing manufacturing technology

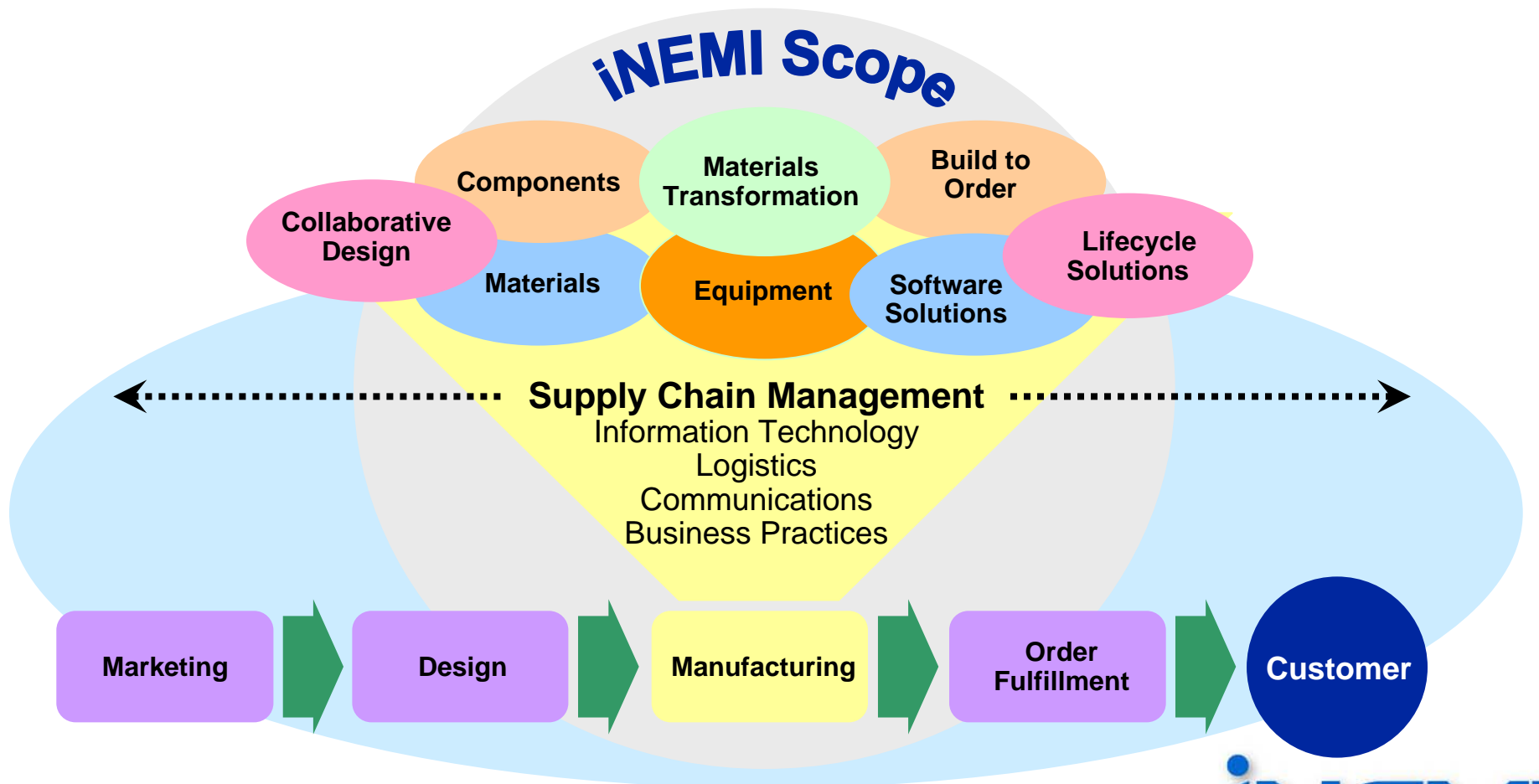
Who Are We?

- **iNEMI Organization:**
 - Corporate membership
 - Not-for-profit, R&D consortium
 - Collaboration defined by organization by-laws, intellectual property policy, and project agreements.
- **Member companies/Organizations:**
 - Leadership OEM, EMS, and Supplier companies
 - Government labs
 - Academic Institutions.
- **Small staff provides services to facilitate collaboration:**
 - Support to help organize & manage projects
 - Communication services for collaboration
 - Newsletters
 - Web/ftp sites
 - Project meetings at appropriate industry venues
 - Project report publication.
 - Relationships with other Organizations:
 - Roadmapping
 - Standards
 - Joint projects.



iNEMI Mission

Identify and close technology gaps, which includes the development and integration of the electronics industry supply infrastructure.



iNEMI

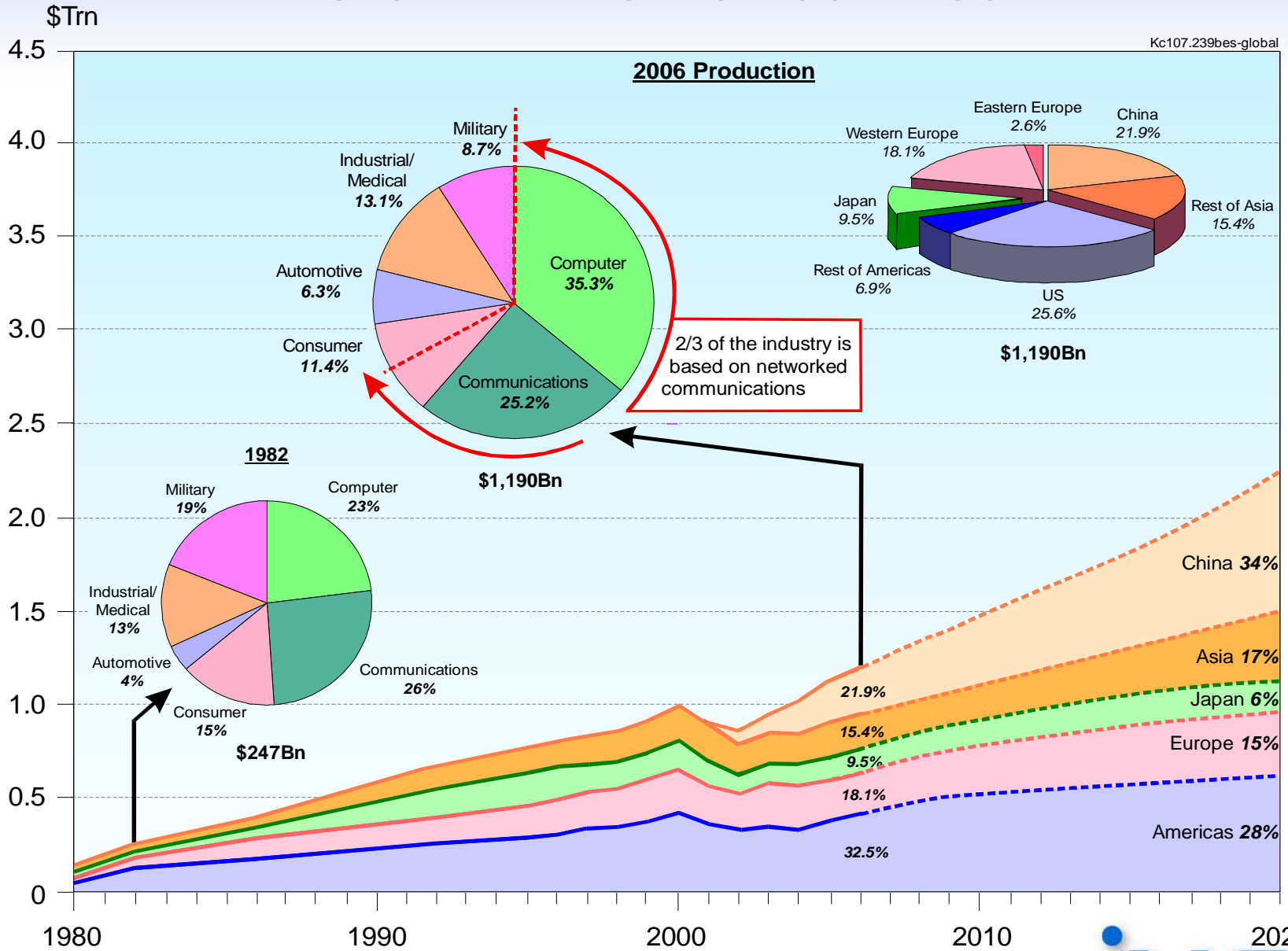
What do we do?

- **iNEMI coordinates industry wide responses to address Technology Gaps in the areas of member companies interest:**
 - Common understanding and synchronized solutions to technology gaps through the major manufacturing hubs
 - Integrated supply chain drives efficiency
 - Time to Market
 - Cost
 - Reduced total investment
- **iNEMI is a viable venue for working supply chain relationships and challenges.**
- **China has become a Major Electronics Manufacturing hub:**
 - Today 21.9% of electronics assembly is in PRC
 - Projected to be 34% by 2020 (Prismark Partners)
 - Americas, Europe, Japan, & rest of Asia expected to shrink or have small growth over same time period.



THE GLOBAL ELECTRONICS INDUSTRY

Kc107.239bes-global



2/3 of the industry is based on networked communications



How do we do?

Leverage the combined Power of Member Companies and their Partners to Provide Industry Leadership

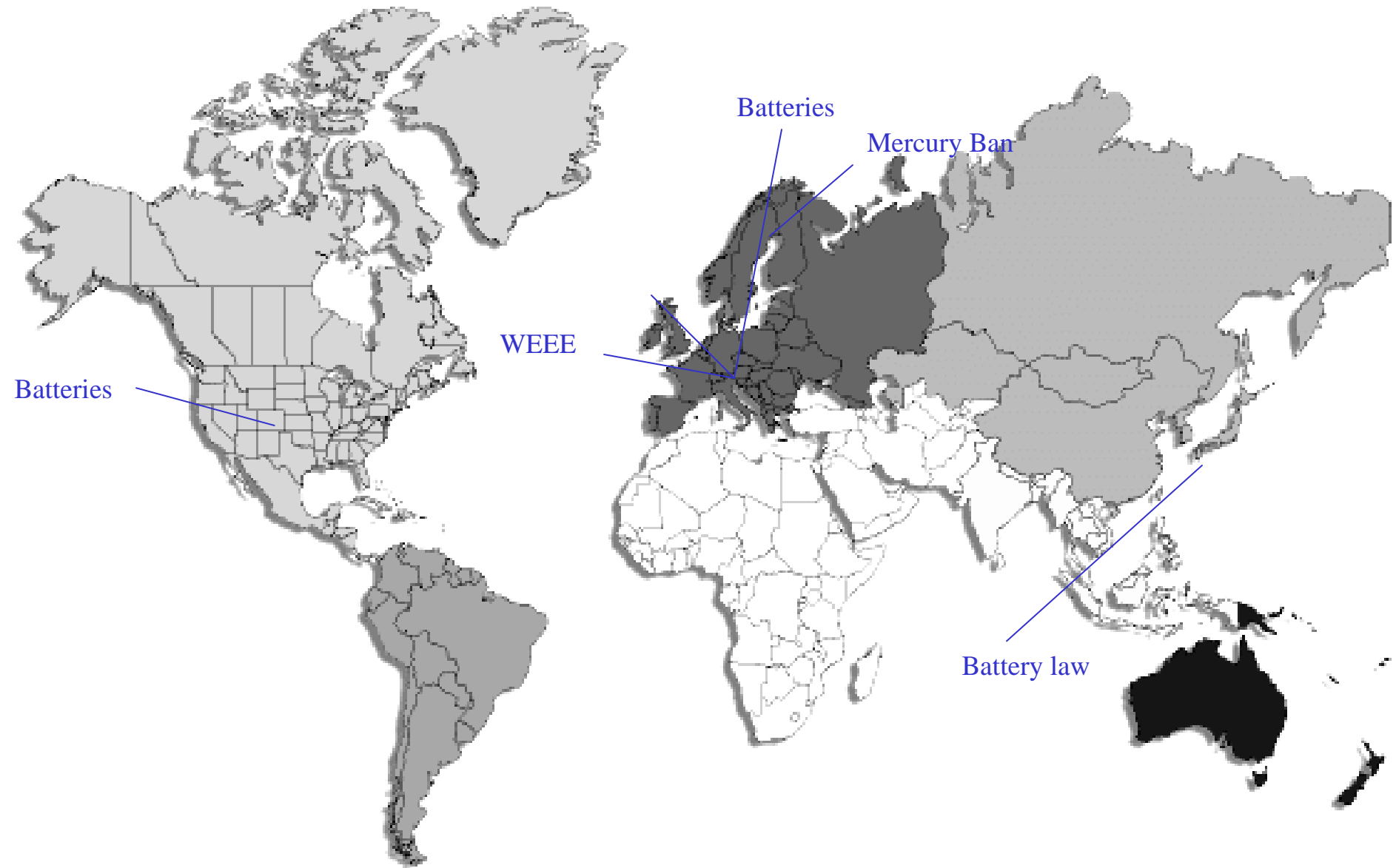
- **iNEMI Roadmaps the Global Needs of the Electronics Industry**
 - Evolution of existing technologies
 - Predictions on emerging/innovative technologies
- **iNEMI Identifies Gaps (both business & technical) in the electronics Infrastructure**
- **iNEMI Stimulates R&D Projects to fill these Gaps**
- **iNEMI Establishes Regional Implementation Projects to Eliminate these Gaps**
- **iNEMI Stimulates Global Standards to speed the Introduction of New Technology & Business Practices**
- **iNEMI mission is to work with other organizations to insure that government policy recommendations and industry direction are aligned.**



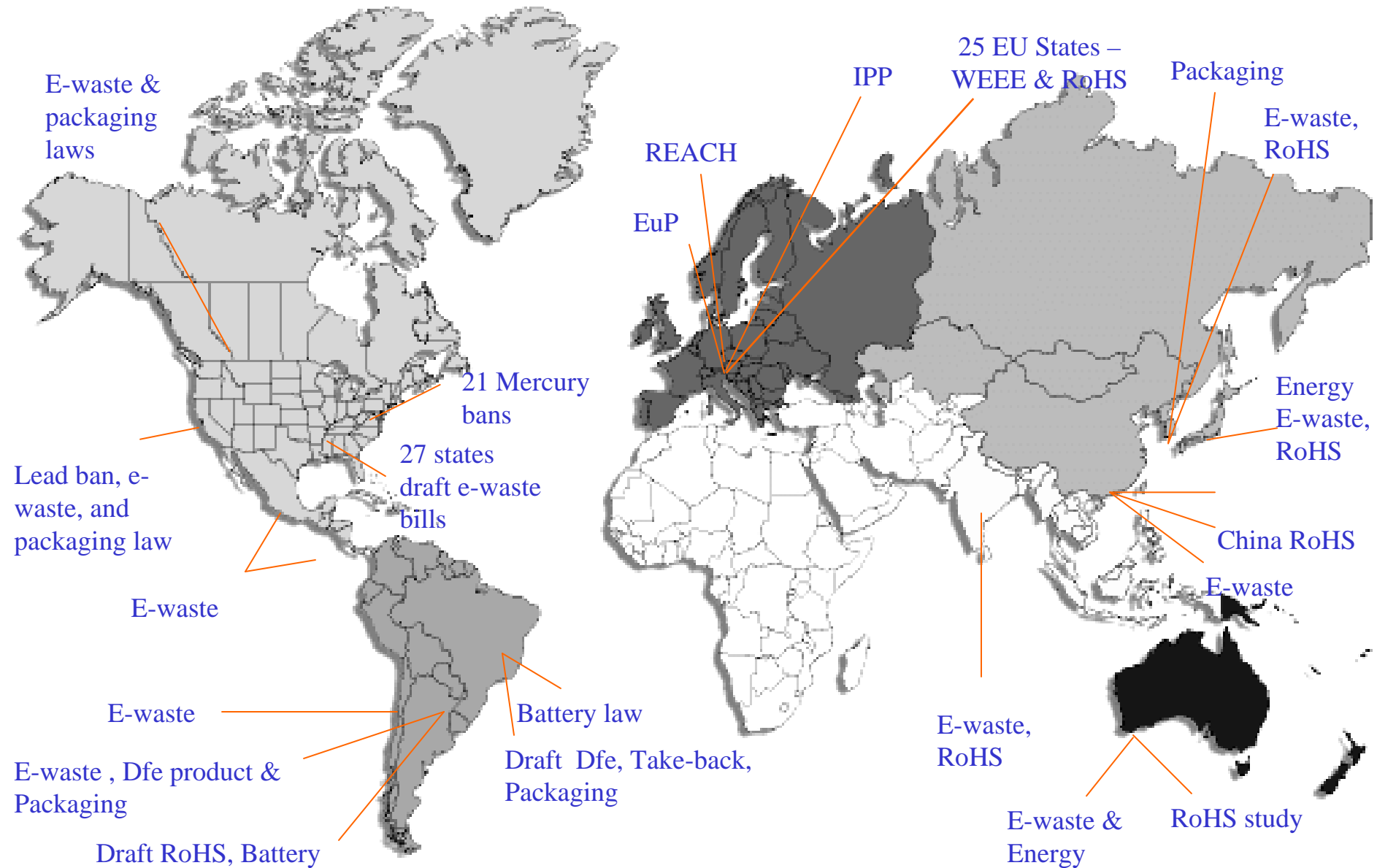
One Example



Global Environmental Regulatory Landscape: 2000



Global Environmental Regulatory Landscape: 2007



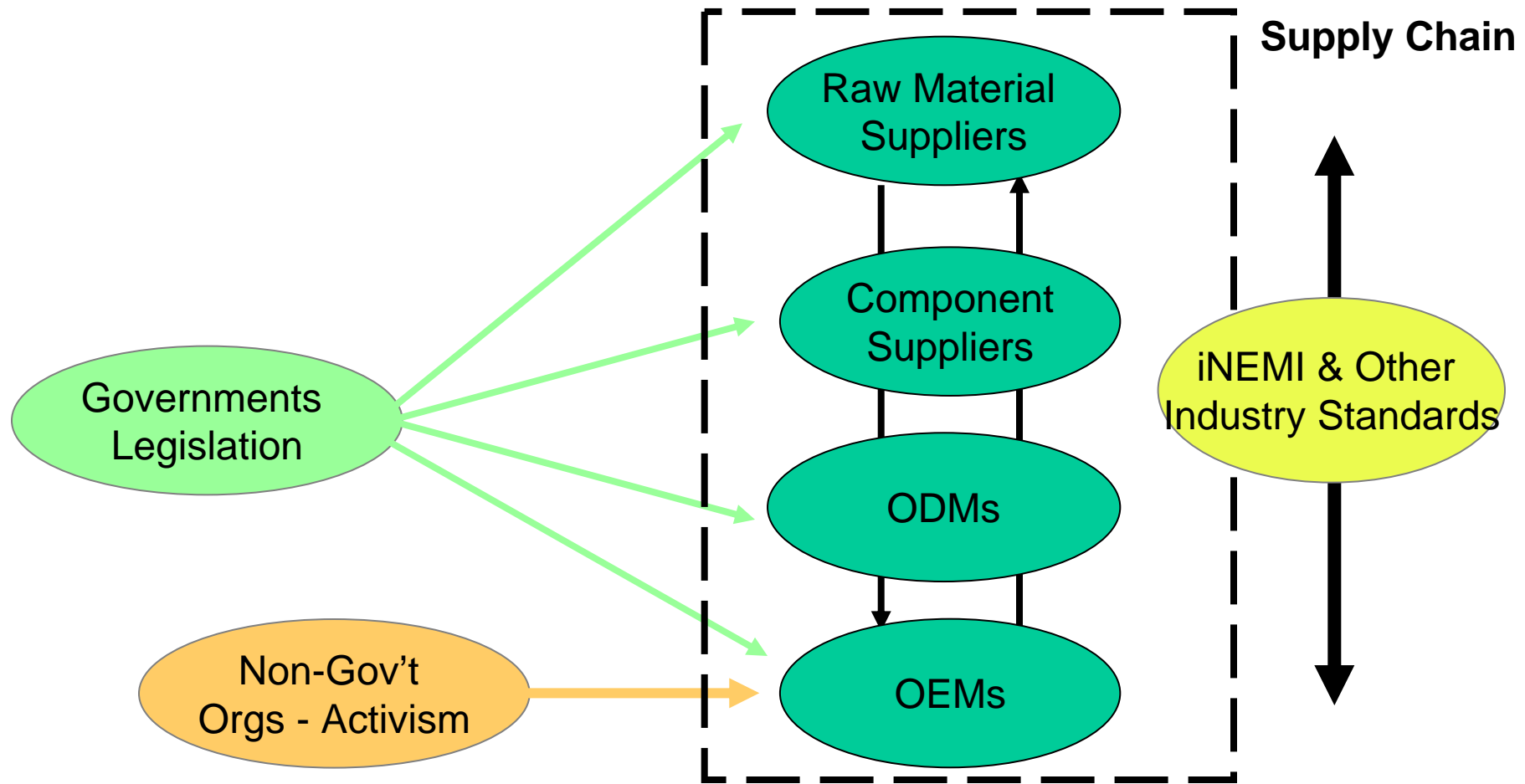
Changing Expectations



Consumers increasingly judge products and companies on their environmental performance



Eco-System Alignment is Critical



iNEMI works to align the supply chain and ensure smooth industry transitions



OEM/EMS Members



Alcatel-Lucent



CISCO



ANALOGIC ■

*The World Resource
for Health & Security Technology*

DELPHI



HUAWEI



Celestica™



i n v e n t

Boston
Scientific

Delivering what's next.™



Medtronic

Alleviating Pain · Restoring Health · Extending Life



MICRO SYSTEMS
ENGINEERING

JABIL



PLEXUS

®



MOTOROLA



SANMINA-SCI



SOLECTRON®



Sun
microsystems

INEMI

Supplier Members



Ciba



Association/Consortium, Government, Consultant & University Members



ASSOCIATION CONNECTING
ELECTRONICS INDUSTRIES®



NIST

National Institute of Standards and Technology

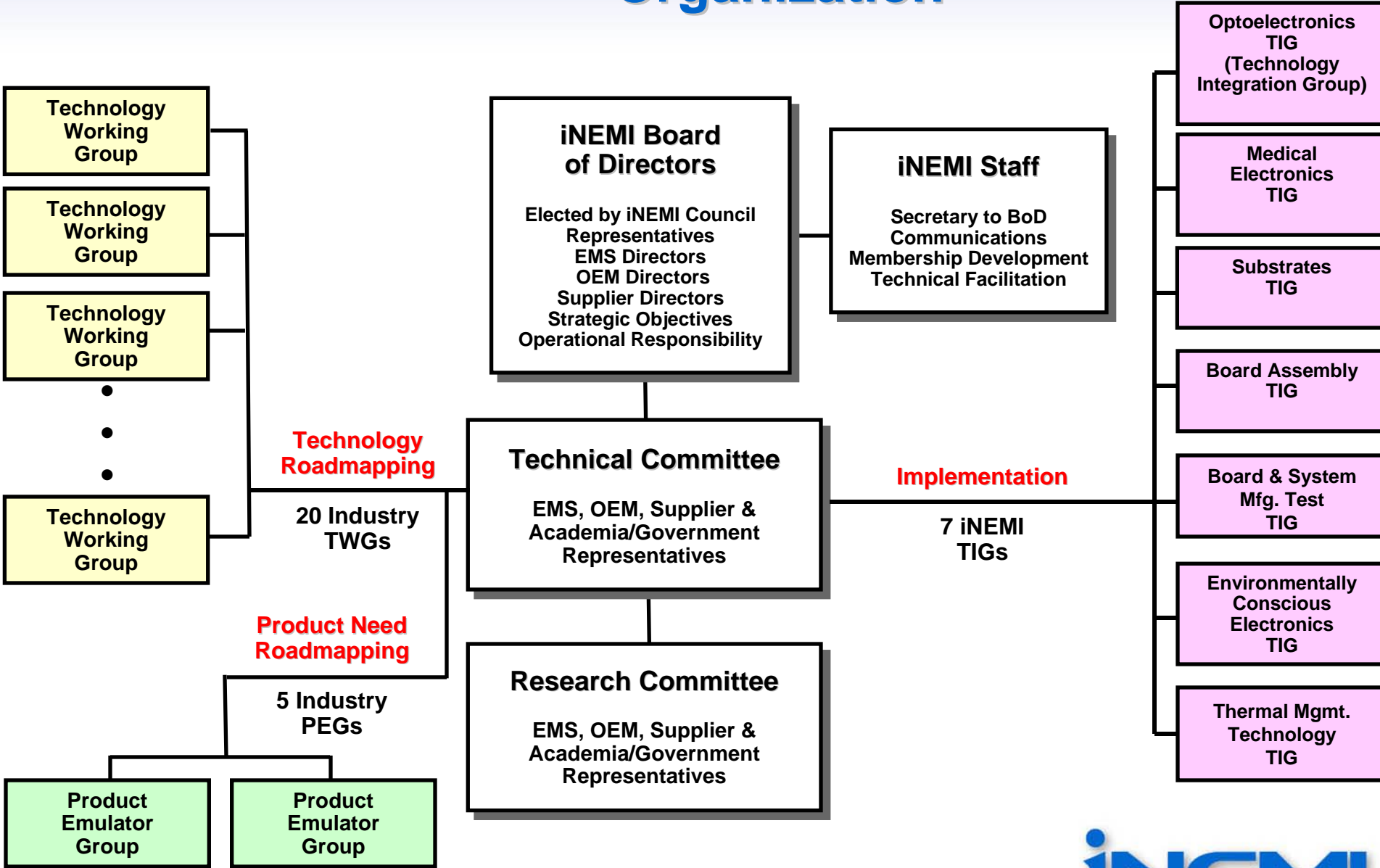
Développement
économique
et régional

Québec



iNEMI

Organization



Board of Directors

Directors

- 👉 Dr. Nasser Grayeli, VP of Technology & Mfg., Director Assembly and Test Technology Development Intel – Chairman
- 👉 Dr. Marc Benowitz, Director Reliability & Eng. Infrastructure, Alcatel-Lucent
- 👉 Monroe Huang, Mgr. Mfg. Technology Dev. , Delphi Electronics & Safety
- 👉 B.J. Han, CTO, STATS/ChipPAC
- 👉 Dr. Sundar Kamath, CTO Assembly Technology, Sanmina-SCI
- 👉 Minoru Okamoto, VP CCC Electronics, Tyco Electronics
- 👉 Jeroen Schmits, President, Universal Instruments
- 👉 Michael Toben, Director Pkg. & Finishing Technology, Rohm & Haas

Ex officio Members

- 👉 Dr. William Anderson, Director, EEE Laboratory, NIST
- 👉 Fred Kuhlman, Co-Chair iNEMI Technical Committee, Delphi
- 👉 Jim McElroy, CEO, iNEMI
- 👉 Dr. Robert Pfahl, VP of Operations, iNEMI



How did we Get Here?

- **Driven by iNEMI Board of Directors**
- **Plan required strong member support at all critical milestones**
- **Key Milestones:**
 - **Forum I in North America on Mfg. in China (November 2002)**
 - **Forum II in China to further develop objectives of iNEMI efforts within China (October 2003)**
 - **First iNEMI International Roadmap in 2004**
 - **iNEMI China Collaboration established in 2005**
 - **Office established in 2007**
 - **Hired manager**
 - **Created legal entity**
 - **Started first project in China**



What we expect from this meeting?

- **To formally introduce iNEMI and invite China industry members to join us to lead the industry alignment.**
- **To encourage participation from leadership companies, academia, and government organizations in order to:**
 - **Engage the best minds of all major manufacturing & technology trusts**
 - **Develop solutions that will be globally supported and embraced**
 - **Avoid solutions that can fragment the global supply chain and increase cost/complexity for industry.**
- **Extend invitation to you to join iNEMI to drive an industry wide responses for the common cause:**
 - **Become a member organization to support the common good**
 - **Participate in collaborative efforts to ensure success**
 - **Extract value for your respective company.**



www.inemi.org

Email contacts:

Jim McElroy

jmcelroy@inemi.org

Bob Pfahl

bob.pfahl@inemi.org

Haley Fu

Haley.fu@inemi.org

INEMI

Advancing manufacturing technology

