



iNEMI

International Electronics Manufacturing Initiative

iNEMI in China

October 2007

Advancing manufacturing technology

Regional Center in China

- **iNEMI China Collaboration has been active for three years**
 - Member forums
 - Project support
- **Made decision in 2006 to proceed with China center**
- **China representative office registration was approved in July 2007**
- **Office is in the Cimic Tower in Pudong, Shanghai**



Regional Center in China

- **Dr. Haley Fu, Manager of Operations-China**
 - Several years in electronics industry, with experience in environmentally preferred product development, surface-mounting technology, lead-free soldering, and supply chain cost reduction
 - PhD from Shanghai Jiao Tung University with studies at TU Berlin



iNEMI Evolution – Phased Approach to Globalization

- **The Board of Directors embarked on a process to change the organization to better meet the needs of member companies in today's global marketplace.**
- **They decided to adopt a phased approach to proceed in a deliberate and controlled way.**
- **For each phase there have been key goals and clear success criteria.**
- **We will modify / adapt based on experience as we move forward.**

Phase 1 – Global Roadmapping

- **Key goals**
 - Expand roadmap process to create global view of future
 - Explore regional deployment collaboration using experience in China as vehicle
- **Operational strategy**
 - Targeted approach to global TWG input
 - Continue single-thread gap analysis
 - Regional collaboration within existing membership
- **Success criteria**
 - Acceptance of roadmap as global document
 - Developing regional collaboration within membership

Completed

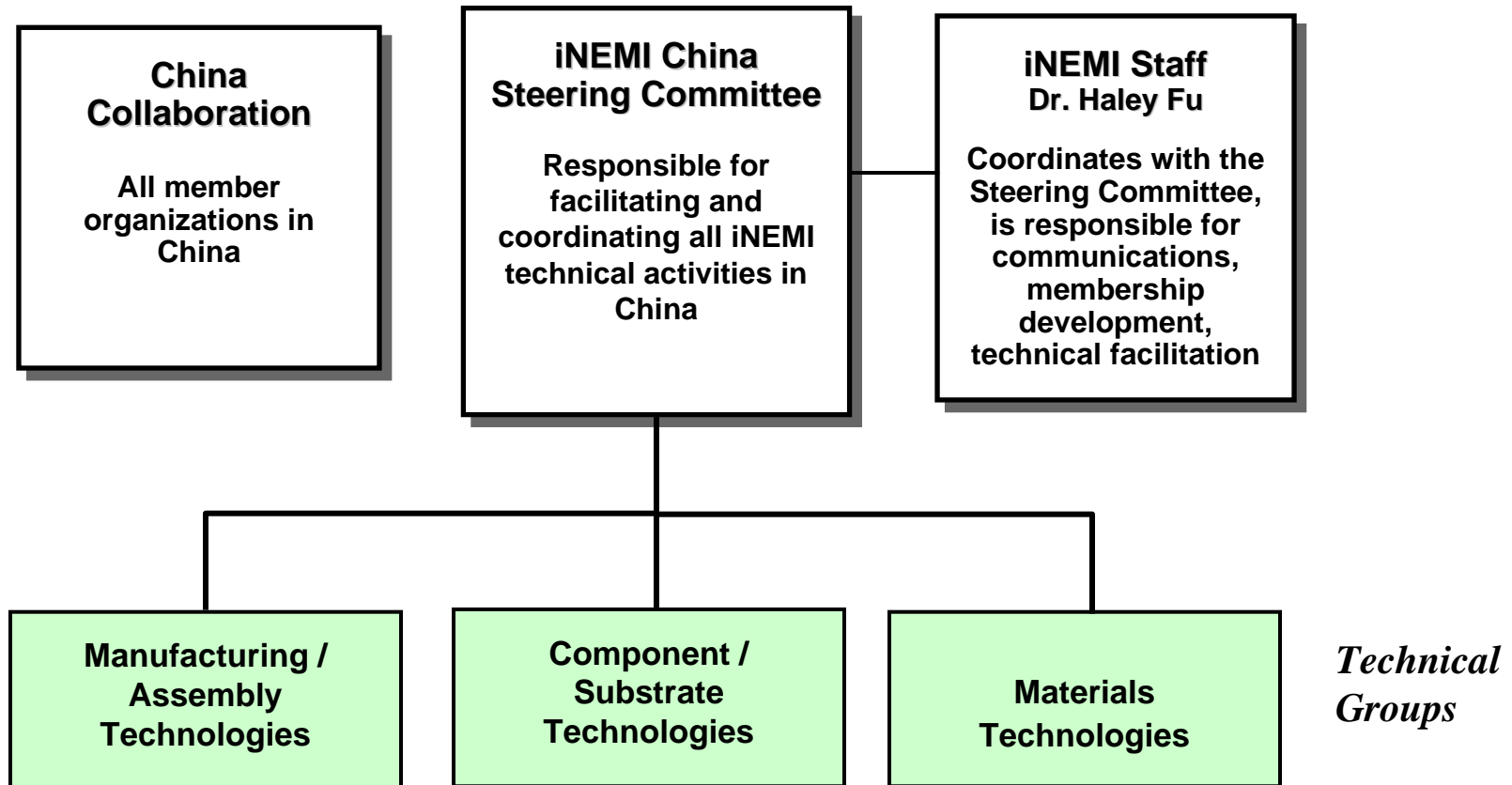
Phase 2 – Regional Collaboration

- **Key goals**
 - Strengthen global gap analysis **Completed**
 - Establish regional center(s) of collaboration **Completed**
- **Operational strategy**
 - Formal alliances with regional organizations or formation of local iNEMI
 - **Establish regional projects led by existing membership base**
- **Success criteria**
 - **Completion of successful projects in the region**
 - **Successful integration of regional suppliers as members**

Phase 3 – Regional Expansion

- **Key goals**
 - Globalize OEM / EMS membership **In Process**
- **Operational strategy**
 - Use Regional Centers to attract OEMs from the region
 - Formal alliances with regional organizations
- **Success criteria**
 - Successful integration of new global OEM / EMS members into activities of Regional Centers **In Process**

China Organization



China Collaboration - July 2007



China Steering Committee

- **Chair: ZHU Jian, Director of PBA Manufacturing, Alcatel Shanghai Bell**
- **Secretary: Dr. Haley Fu, Manager of Operations, iNEMI**
- **CAO Xi, Chief Engineer & Co-operation Manager, Huawei**
- **Henry Ding, General Mgr. of Electro & Communication Business, 3M**
- **Simon Lee, Regional Mgr. Marketing and Engineering, Rohm & Haas**
- **George Lim, Senior QRA & Engineering Director of Asia, Celestica**
- **Jim Liu, Manager, Physical and Digital Realization Research-Asia, Motorola**
- **LIU Xinqiang, Engineering Manager of Product Development, Intel**
- **Dave Martin, Vice President, Shanghai Engineering Center, Tyco Electronics**
- **Zambri Samsudin, Manager of Advance Manufacturing Technology - Asia, Jabil**
- **SHI Dong-Wei, Greater China VP, Corporate Relations, Agilent**
- **Sky Yang, Manufacturing Engineering Manager, Delphi**



China Technical Subcommittees

- **Manufacturing / Assembly Technologies**
 - Chair: Scott Xiao, Solectron - Suzhou
- **Component / Substrate Technologies**
 - Chair: LIU Xinquiang, Intel Products - Shanghai Ltd.
- **Materials Technologies**
 - Chair: HOU Weixing, 3M China Limited

2007 Priorities for iNEMI China

Within iNEMI

- **Build the iNEMI China members network**
- **Identify and establish projects as appropriate**
 - China participation-regional leader
 - China leadership
- **Establish 3 technical planning teams and identify leaders**
 - Manufacturing / assembly technologies
 - Component / substrate technologies
 - Materials technologies

External to iNEMI

- **Establish relationships with other organizations in China**
 - International organizations: IPC, AEA, IEEE CPMT, SMTA, IMAPS
 - Local associations, electronics industry societies: CIE, CEPS, CPCA, etc.
 - Universities & institutes: Tsinghua, SHJT, SU SMIT, GUST, HUST, CAS SICA, HKUST, etc
- **Plan forum and office opening ceremony (January 16, 2008)**

iNEMI Forum and Opening Ceremony

Location: Courtyard Marriott Hotel, Pudong, Shanghai

Date: January 16, 2008

- **Opening: 09:30-12:00**
- **Luncheon: 12:00-13:00**
- **Forum: 13:00-17:00**



iNEMI

Opening Ceremony

Master of Ceremonies

ZHU Jian (Alcatel-Lucent), Chair, China Steering Committee

Welcome and Introduction

Nasser Grayeli (Intel), iNEMI Chairman

iNEMI Overview

Jim McElroy, CEO, iNEMI

iNEMI China

Haley Fu, Manager of Operations, iNEMI

Participants in the Opening

- **Government Representative**
 - TBD, Ministry of Information Industry of China
 - TBD, Shanghai Government Representative
- **Academic Representatives**
 - Prof. Johan Liu from SMIT
 - Prof. Jusheng Ma from Tsinghua
 - Prof. Chen Lu / Prof. Shaojun Liu from SJTU
 - Prof. Ricky Lee from HKUST
- **Organizational Representatives:**
 - SMTA: ZHU Jian
 - CPMT: Bill Chen
 - IPC: David Bergman
 - CEPS: Prof. Bi Keyun
 - SICA: Prof. Zou Shichang

Ribbon Cutting



iNEMI Forum

- **Theme: Innovation for the electronics industry**
- **Presentations from industry and research institutes**
- **Topics:**
 - **Miniaturization**
 - **Energy and the environment**
 - **Increasing the reliability of electronics**

China Collaboration Meetings — 2008

- **January 16 — Forum and opening of China office, Shanghai**
- **March 17 — China Collaboration meeting, Shanghai (during Productronica & Semicon, March 18-20)**
- **August 25 — China Collaboration meeting, Shenzhen (during NEPCON China South, August 26-29)**
- **December 14 — Year-end China Collaboration meeting, Shanghai (summary & networking)**

Room 1409, Cimic Tower
800 Shang Cheng Road, Pudong
Shanghai 200120, China
Tel: +86+21-58353839
haley.fu@inemi.org

上海市浦东商城路800号
斯米克大厦1409室
邮编：200120
电话：+86+21-58353839

INEMI
Advancing manufacturing technology

