



International Electronics Manufacturing Initiative

2007 Roadmap Kickoff
16 November 2005,
13:00 – 17:00

*Co-Sponsored by IEEE CPMT Society,
Fraunhofer IZM, IMAPS Europe*



IEEE COMPONENTS, PACKAGING AND
MANUFACTURING TECHNOLOGY SOCIETY



Fraunhofer
Institut
Zuverlässigkeit und
Mikrointegration



13:00	Welcome and Introduction	Jim McElroy, CEO, iNEMI
13:10	iNEMI Roadmapping Process	Chuck Richardson, iNEMI
13:30	CPMT Participation in Roadmap	Rolf Aschenbrenner, IZM
13:45	IMAPS Participation in Roadmap	Paul Collander, Poltronic
14:10	Automotive PEG	Galen Reeder, Delphi
14:30	Packaging TWG	Juergen Wolf, IZM
14:50	Board Assembly TWG	Bob Pfahl, iNEMI
15:05	Break	
15:20	Environmentally Conscious Electronics TWG	Nils Nissen, IZM
15:40	Breakouts	
	<ul style="list-style-type: none">– Identify key European TWG areas– Identify key companies for participation– Identify strategies for European recruitment	
	Automotive	Galen Reeder, Delphi
	Netcom	Paul Collander, Poltronic
16:20	Report back	Breakout leaders
16:45	Summary and Next Steps	Bob Pfahl
17:00	Social Hour	



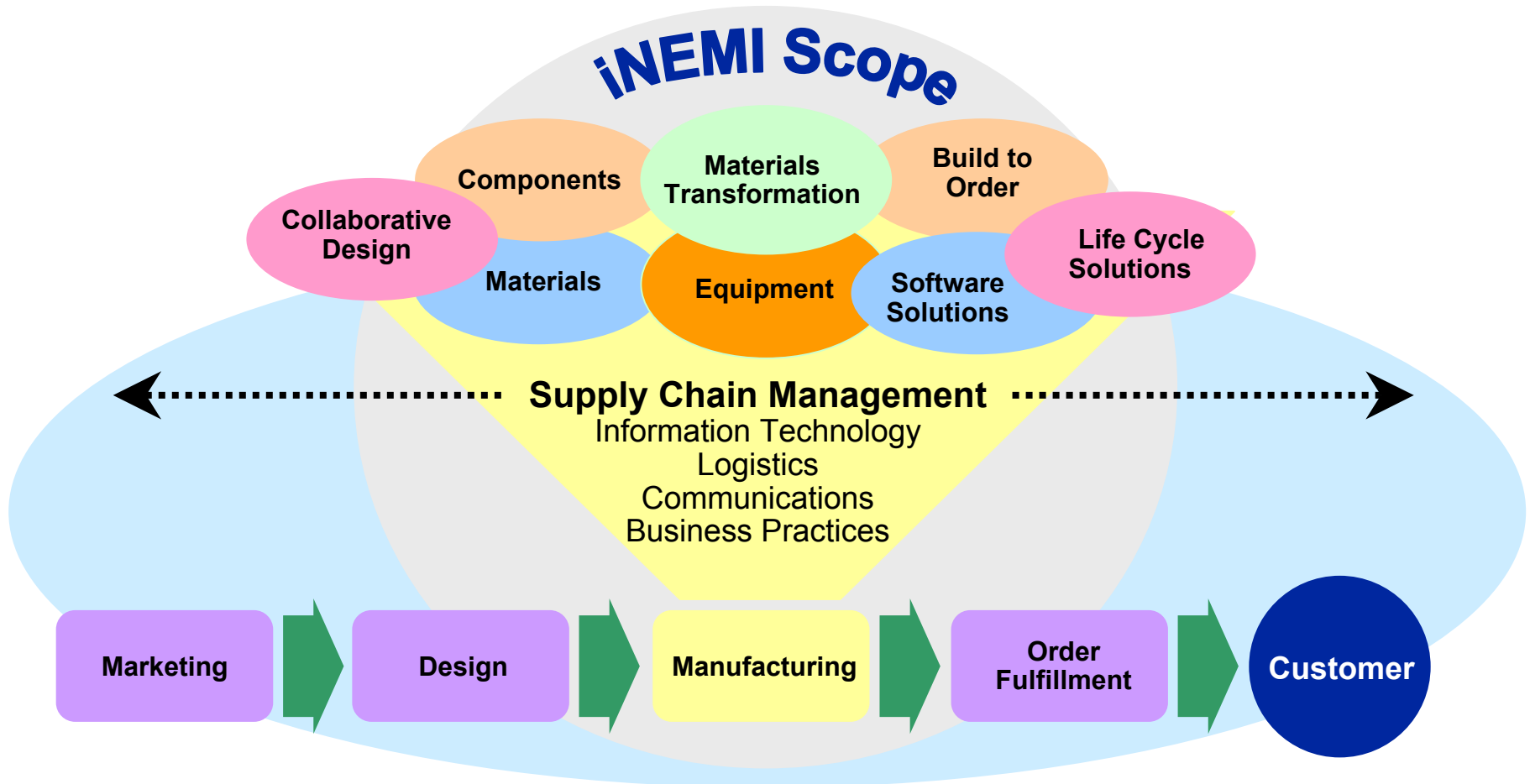
International Electronics Manufacturing Initiative

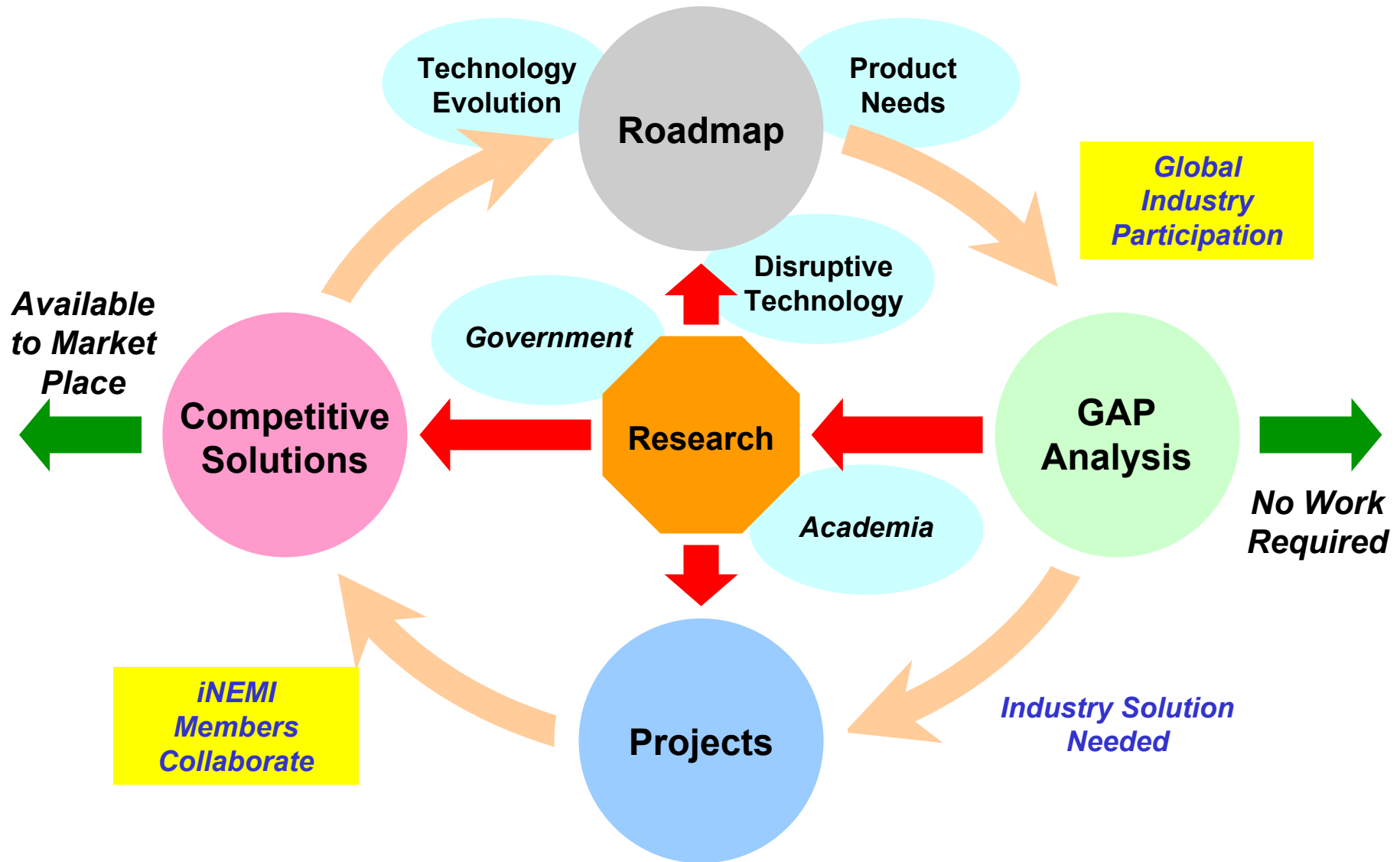
**Industry
Collaboration**



Productronica 2005

Assure Leadership of the Global Electronics Manufacturing Supply Chain for the benefit of members and the industry





“Connect with and Strengthen Your Supply Chain”

- **iNEMI offers the opportunity to collaborate with the entire supply chain in an efficient manner**
 - To understand and accelerate strategic directions
 - To define future needs and opportunities
 - To jointly create industry standard solutions.
- **Today’s increasingly distributed supply chain makes this more important than ever.**
- **iNEMI is a member driven organization that adapts to industry changes quickly and provides timely leadership.**
- **iNEMI provides important deliverables:**
 - Technology roadmaps
 - Research priorities
 - Forums on key industry issues
 - Deployment projects.

*Leverage the combined power of companies
to provide industry leadership*

- **iNEMI roadmaps the global needs of the electronics industry**
 - Evolution of existing technologies
 - Predictions on emerging/innovative technologies
- **iNEMI identifies gaps (both business & technical) in the electronics infrastructure**
- **iNEMI identifies and prioritizes research needs.**
- **iNEMI stimulates worldwide standards to speed the introduction of new technology & business practices.**

Leverage the combined power of member companies to provide industry leadership

- **iNEMI stimulates research/innovation to fill gaps**
- **iNEMI sponsors workshops and forums on emerging technology and issues**
- **iNEMI works with other organizations to ensure that government policy recommendations are aligned with our mission.**
- **iNEMI establishes implementation projects to eliminate gaps**
 - **Develop processes**
 - **Evaluate alternative technologies**
 - **Identify equipment needs**
 - **Determine component requirements**
 - **Develop standards proposals**
 - **Communicate results to members**



Alleviating Pain · Restoring Health · Extending Life



BUSINESS WITHOUT BOUNDARIES



SANMINA-SCI



The Enterprise Mobility Company™



ELECTRONIC MATERIALS



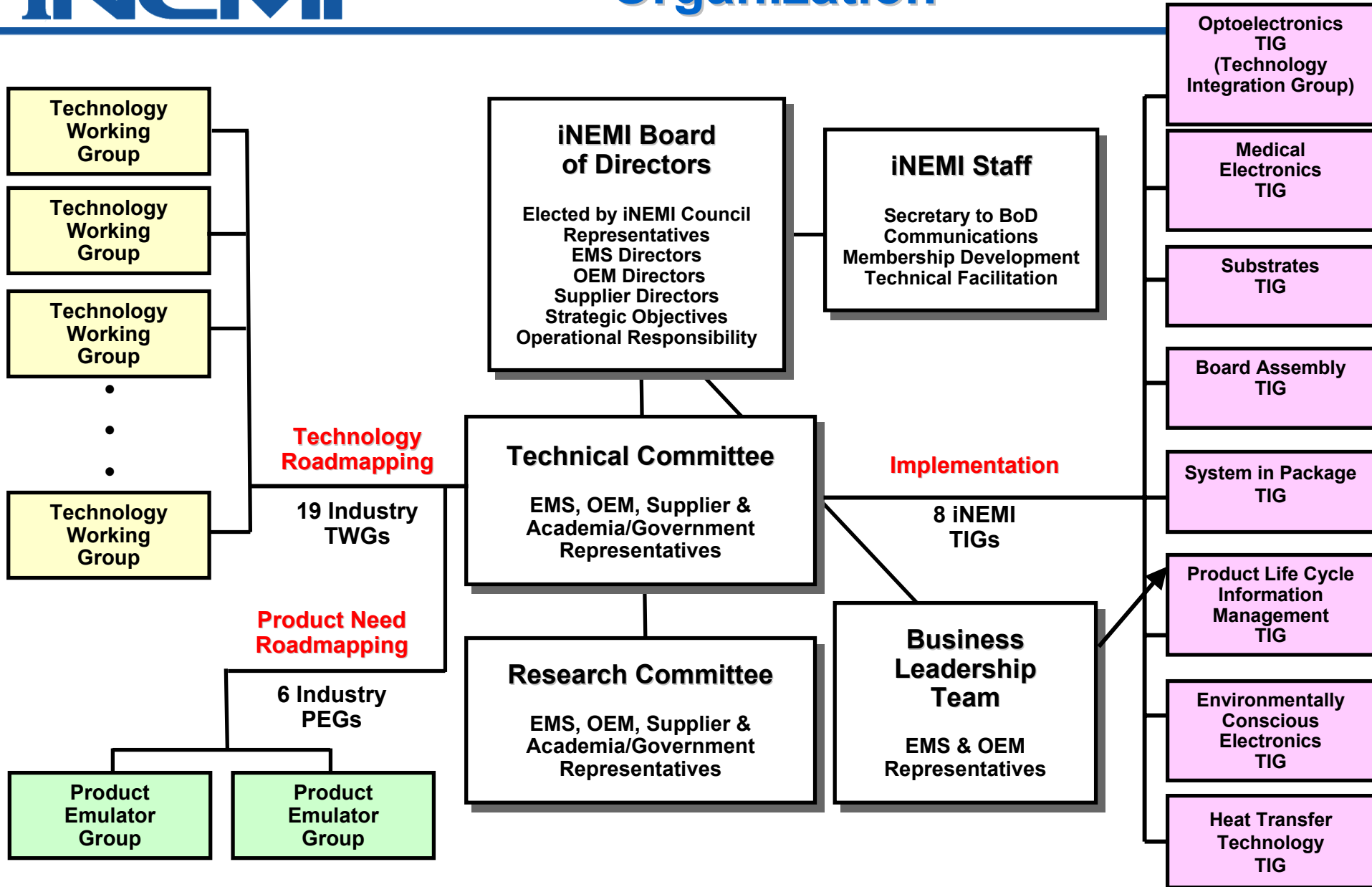
Consultants, Government, Organizations & Universities



Développement
économique
et régional

Québec 

Virginia's Center for
Innovative Technology



- **The companies represented**
 - OEMs who are market leaders in innovative products
 - EMS providers who are global leaders in manufacturing
 - Leading suppliers for manufacturing equipment, materials, components, and software.
- **The specific participants within those companies**
 - Board of Directors
 - Technical Committee
 - Council Members
- **Reputation of iNEMI as an industry leader**
 - Roadmapping
 - Industry forums
 - Collaborative projects to close identified gaps:
 - Lead-free interconnect
 - Distributed manufacturing software standards



International Electronics Manufacturing Initiative

Productronica Events



*Increase Participation of
European Firms*

Innovation Priorities for 2015 Vision

Productronica Forum, Hall A6, 13:00-13:30

Bob Pfahl, iNEMI will present highlights from the September 2005 iNEMI Innovation Leadership Forum and the iNEMI Roadmap.

iNEMI/IPC Standard for Exchanging RoHS Composition Data

Productronica Forum with ZVEI-Podium, Hall B3, 14:20-14:50

Richard Kubin, E2open, will provide the status of materials data composition exchange standards and urge global standardization.

Implementing the iNEMI/IPC Composition Data Exchange Standards

iNEMI Conference Room A 61, 9:00 - 12:00

(Co-sponsored by IPC)

This meeting will encourage industry to adopt the IPC-1752 standard

2007 iNEMI Roadmap/European Kick-Off Meeting

iNEMI Conference Room A 61, 13:00 - 17:00

(Co-sponsored by IEEE's CPMT Society, Fraunhofer IZM, IMAPS Europe)

Implementing the iNEMI System-in-Package Technical Plan

iNEMI Conference Room A 61, 9:00 - 12:00

This meeting will review and prioritize gaps identified in the iNEMI Technical Plan and develop projects to close the gaps.

Update on Pb-Free Soldering Optimization

Productronica Forum, Hall A6, 13:00-13:30

Denis Barbini, Vitronics Soltec will provide the latest update on three ongoing iNEMI projects to optimize Pb-free soldering:

System in Package Technology

Productronica Forum with ZVEI-Podium, Hall B3, 13:30-14:00

Bob Pfahl, iNEMI will discuss identified SiP technology needs and the iNEMI action plan

- Gap analysis completed
- 10 year priorities created
- Ready for distribution
- Contents:
 - Technology Research Needs by Product Sector
 - Priorities Summarized by Research Area
 - *Manufacturing Processes*
 - *System Integration*
 - *Materials & Reliability*
 - *Energy and the Environment*
 - *Design*
 - Significant Gaps and Issues from Roadmap
 - Options for Innovation



- A series of 18 Articles by noted authors
- January 1, 2005- July 1, 2006
- CD Available at iNEMI members' booths
 - Jan. '05 – Nov. '05 articles



www.inemi.org

Email contacts:

Jim McElroy

jmcelroy@inemi.org

Bob Pfahl

bob.pfahl@inemi.org